



**REGIONAL SPECIALISED METEOROLOGICAL CENTRE-TROPICAL CYCLONES, NEW DELHI
SPECIAL TROPICAL WEATHER OUTLOOK**

DEMS-RSMC TROPICAL CYCLONES NEW DELHI DATED 14.09.2021

SPECIAL TROPICAL WEATHER OUTLOOK FOR NORTH INDIAN OCEAN (THE BAY OF BENGAL AND ARABIAN SEA) VALID FOR NEXT 120 HOURS ISSUED AT 0900 UTC OF 14.09.2021 BASED ON 0600 UTC OF 14.09.2021.

BAY OF BENGAL:

THE DEPRESSION OVER NORTH CHHATTISGARH & ADJOINING NORTH INTERIOR ODISHA MOVED FURTHER WEST-NORTHWESTWARDS DURING PAST 6 HOURS WITH A SPEED OF 12 KMPH, AND LAY CENTRED AT 0600 UTC OF 14TH SEPTEMBER, 2021, OVER NORTH CHHATTISGARH & NEIGHBOURHOOD, NEAR LATITUDE 22.4°N AND LONGITUDE 83.0°E, ABOUT 80 KM SOUTH-SOUTHWEST OF AMBIKAPUR (42693) AND ABOUT 190 KM EAST-NORTHEAST OF RAIPUR (42874).

IT IS VERY LIKELY TO WEAKEN INTO A WELL MARKED LOW PRESSURE AREA DURING THE NEXT 24 HOURS AND CONTINUE TO MOVE WEST-NORTHWESTWARDS ACROSS MADHYA PRADESH DURING THE NEXT 48 HOURS.

AS PER INSAT 3D IMAGERY AT 0600 UTC, THE SYSTEM IS LYING OVER LAND. ASSOCIATED BROKEN LOW AND MEDIUM CLOUDS WITH EMBEDDED INTENSE TO VERY INTENSE CONVECTION LAY OVER CHHATTISGARH, JHARKHAND, GANGETIC WEST BENGAL, ODISHA, NORTHWEST BAY OF BENGAL & NEIGHBOURHOOD. MINIMUM CLOUD TOP TEMPERATURE IS -93°C.

THE ESTIMATED MAXIMUM SUSTAINED WIND SPEED IS 25 KNOTS GUSTING TO 30 KNOTS. THE ESTIMATED CENTRAL PRESSURE IS 996 HPA.

AT 0600 UTC OF 14TH SEP, THE MSLP RECORDED AT AMBIKAPUR AND RAIPUR IS 996.9, AND 998.6 HPA WITH 24 HOURS PRESSURE CHANGE OF -1.8 HPA, AND -1.8 HPA RESPECTIVELY.

REMARKS:

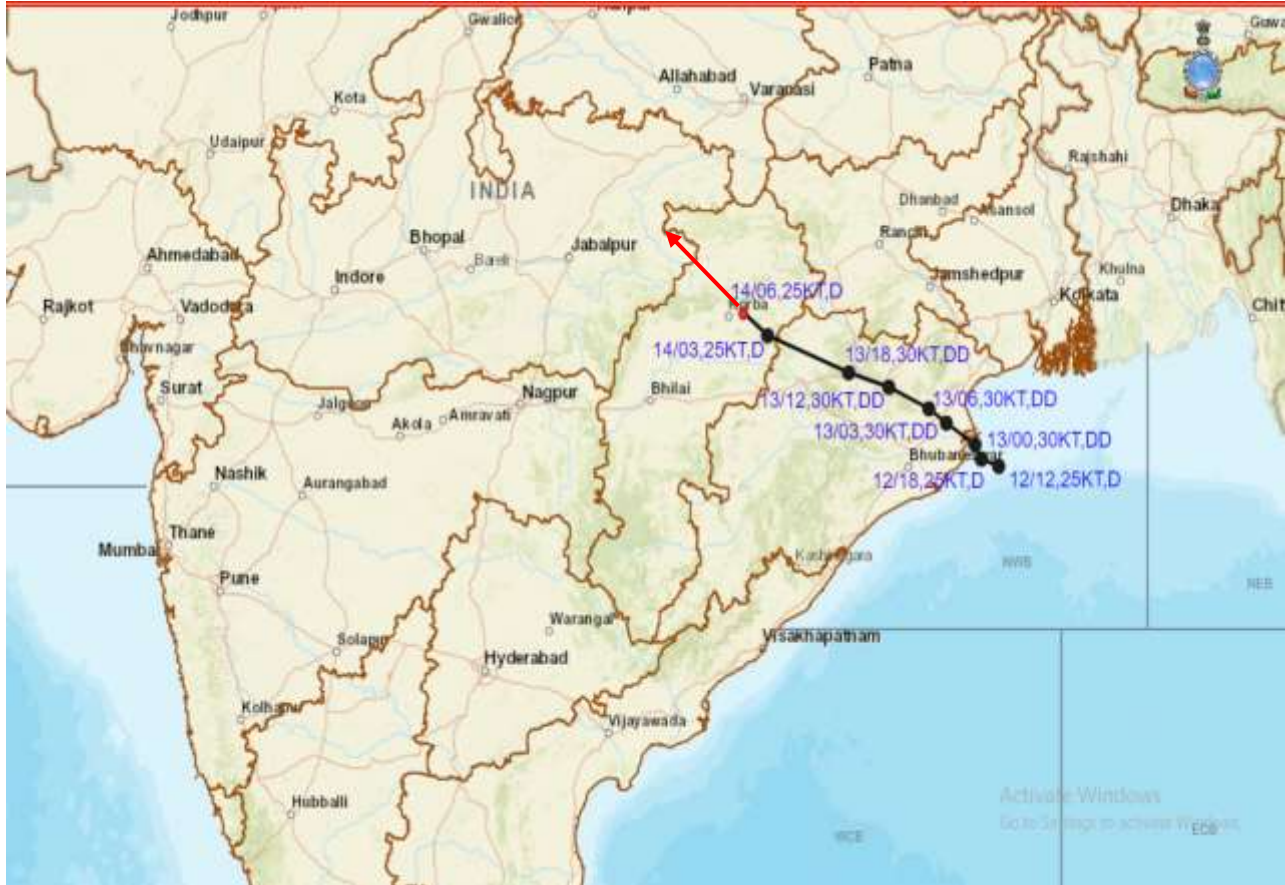
THE SYSTEM IS LYING OVER LAND. THE PREVAILING ACTIVE MONSOON CONDITIONS, THE EXISTING ENVIRONMENTAL CONDITIONS AND MODEL GUIDANCE ARE INDICATING THAT THE DEPRESSION IS VERY LIKELY TO WEAKEN INTO A WELL MARKED LOW PRESSURE AREA DURING NEXT 24 HOURS AND CONTINUE TO MOVE WEST-NORTHWESTWARDS ACROSS MADHYA PRADESH DURING NEXT 48 HOURS. THE UPPER TROPOSPHERIC RIDGE RUNS NEAR 22 DEG N, TO THE NORTH OF THE SYSTEM CENTRE. THE SYSTEM IS BEING STEERED BY THE MEAN WINDS IN MIDDLE AND UPPER TROPOSPHERE (500-850 HPA LEVELS) TOWARDS WEST-NORTHWEST. IT WILL CONTINUE TO STEER SO DURING NEXT 2 DAYS. MARGINAL INTENSIFICATION OF THE SYSTEM CANNOT BE RULED OUT ONCE THE SYSTEM MOVES OVER TO THE WESTERN INDIA, DUE TO FRESH MOISTURE INCURSION FROM THE ARABIAN SEA.

THE NEXT BULLETIN WILL BE ISSUED AT 1500 UTC OF 14TH SEPTEMBER, 2021.







**(SUNITHA DEVI)
SCIENTIST-F, RSMC, NEW DELHI**



OBSERVED AND FORECAST TRACK OF DEPRESSION OVER NORTH CHHATTISGARH & NEIGHBOURHOOD BASED ON 0600 UTC OF 14TH SEPTEMBER, 2021



DATE/TIME IN UTC
IST=UTC + 0530
L: LOW PRESSURE AREA
WML: WELL MARKED LOW PRESSURE AREA
D: DEPRESSION (17-27 KT)
DD: DEEP DEPRESSION (28-33 KT)
CS: CYCLONIC STORM (34-47 KT)
SCS: SEVERE CYCLONIC STORM (48-63KT)
VSCS: VERY SEVERE CYCLONIC STORM (64-89 KT)
ESCS: EXTREMELY SEVERE CYCLONIC STORM (90-119 KT)
SuCS: SUPER CYCLONIC STORM ≥ 120 KT

-  LESS THAN 34 KT
-  34-47 KT
-  ≥ 48 KT
-  OBSERVED TRACK
-  FORECAST TRACK
-  CONE OF UNCERTAINTY

SAT : INSAT-3DR IMG

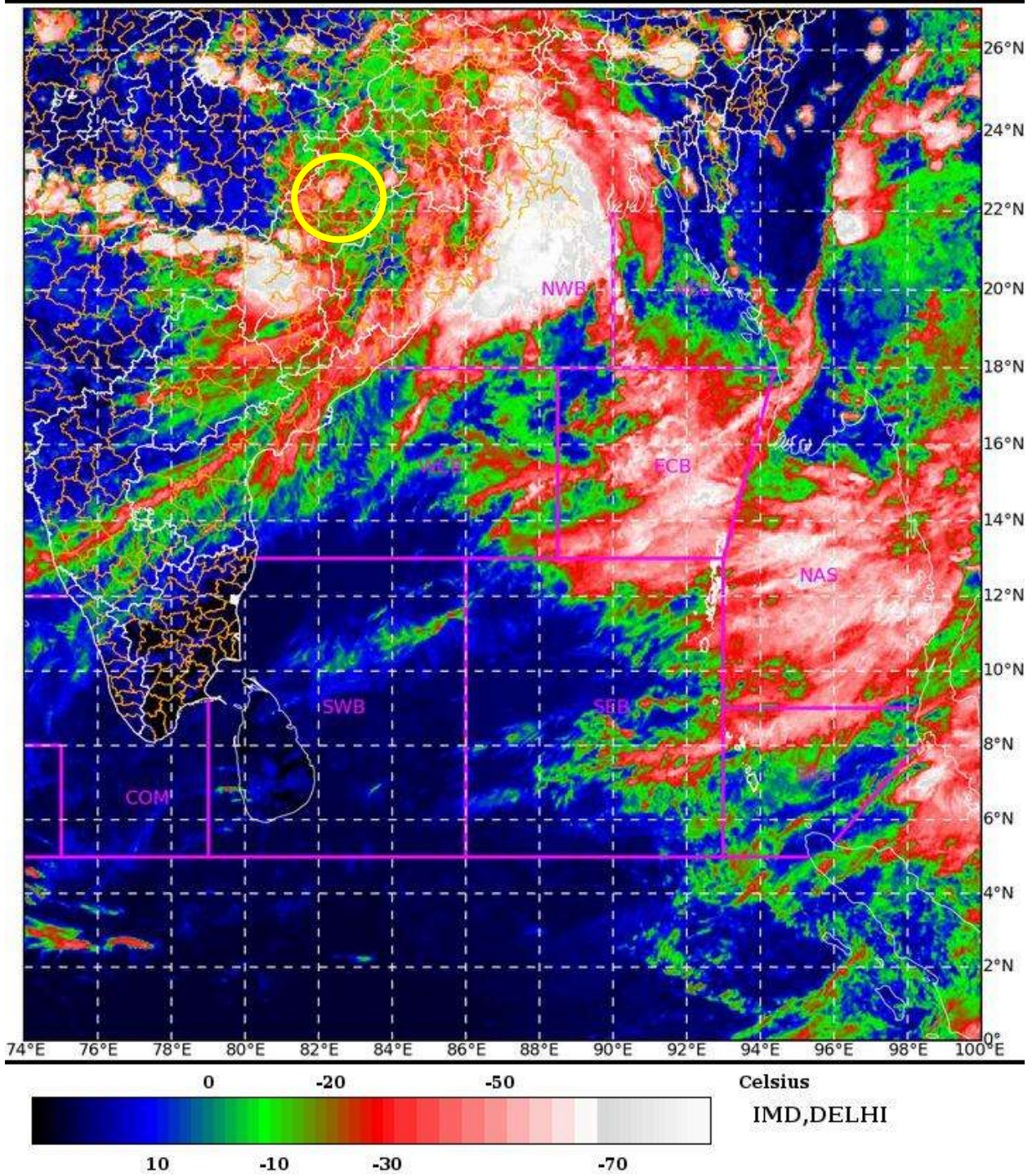
14-09-2021/(0815 to 0842) GMT

IMG_TIR1_TEMP 10.8 um

14-09-2021/(1345 to 1412) IST

L1C Mercator

DEPRESSION 22.4N/83.0E



PROBABILITY OF CYCLOGENESIS (FORMATION OF DEPRESSION):NIL: 0%, LOW: 1-25%, FAIR: 26-50%, MODERATE: 51-75% AND HIGH: 76-100%
This is a guidance Bulletin for the WMO/ESCAP Panel Member countries., Please visit respective National websites for Country specific Bulletins